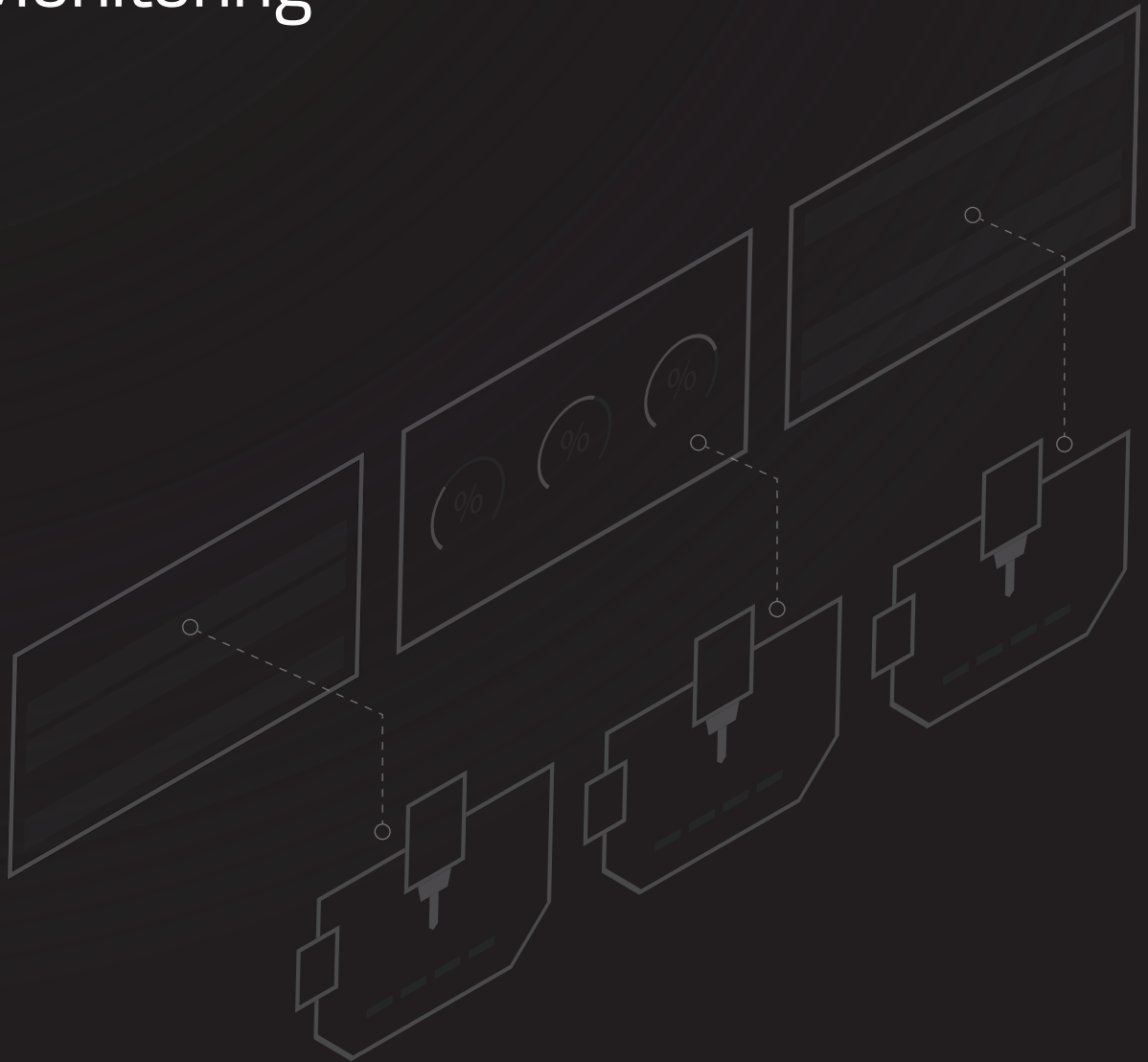




# Manufacturing Data Collection and Monitoring

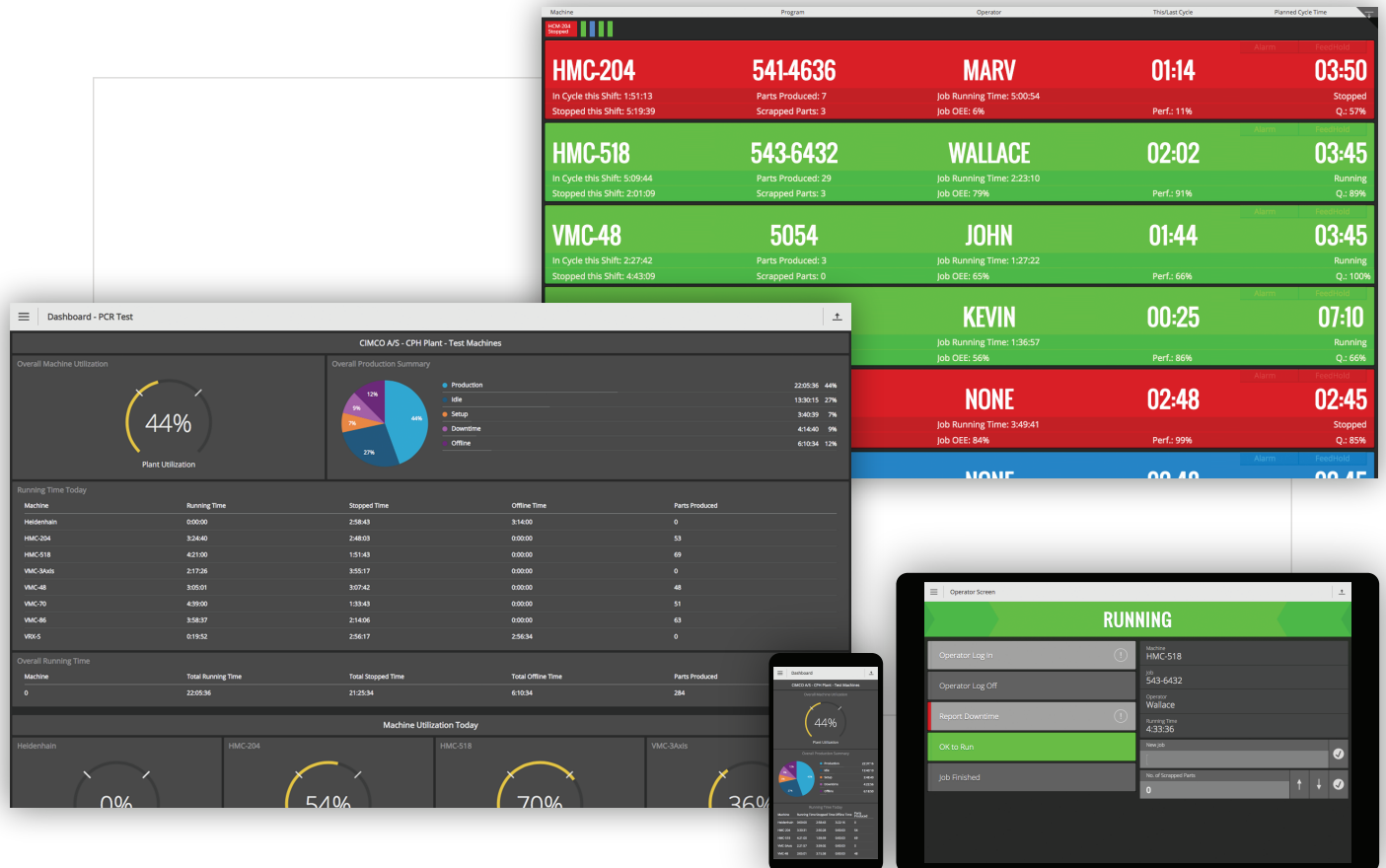


# INTRODUCTION

What is CIMCO MDC-Max?

Unlock the full potential of your production.  
Improve processes, resource use and critical response times.

MDC-Max enables you to collect and analyze data from machines and operators to get real-time and historic insights into your shop floor's productivity, performance and quality. Data can be used for different purposes such as real-time monitoring with Andon boards throughout the company, for planning and analysis, or for export to ERP, MES or other systems.



# BENEFITS

Why use CIMCO MDC-Max?



## Improved efficiency

Understand the performance of equipment and personnel with real-time data collection. Eliminate production bottlenecks and optimize resource utilization.



## Eliminate guesswork

Understand the inner workings of your production with customized reports including machine downtime, OEE and other essential KPIs.



## Accurate data collection

Eliminate manual, time consuming and often inaccurate data collection by automating and streamlining the entire data collection process.



## Reduce administration time

Reduce paper reliance and administrative time. Update your ERP, MES or other administrative system with real-time data from equipment and personnel.



## Faster response times

Monitor and visualize the performance of equipment and personnel to respond faster, catch errors sooner, and communicate better.

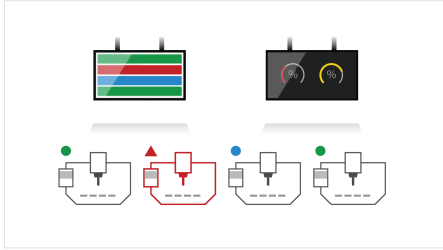


## Access your data anywhere

Access data from one or more sites directly from your mobile device. Easily check the status of equipment or any other information critical to your operation.

# FEATURES

What is included?



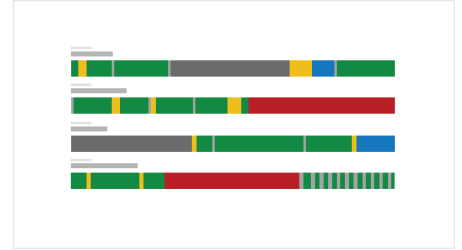
## Real-time monitoring / Andon

See the current status and performance data of your machines on Andon boards, PC and mobile. Customize the layout and content of screens to suit your needs.



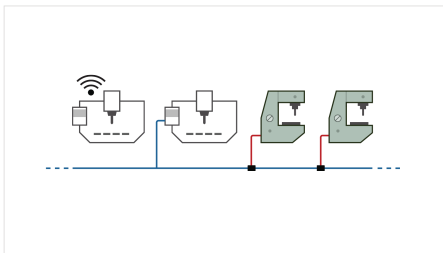
## Customizable reports

Generate reports with calculation of OEE, downtime and other essential KPIs. Set production targets, work shifts and sort data by different factors.



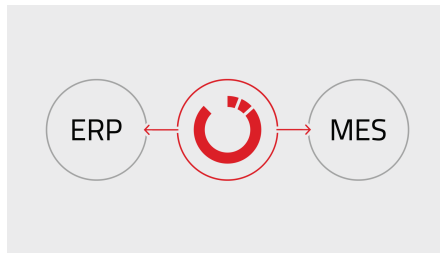
## Real-time reporting

Generate real-time reports that dynamically update as data comes in, such as machine timelines.



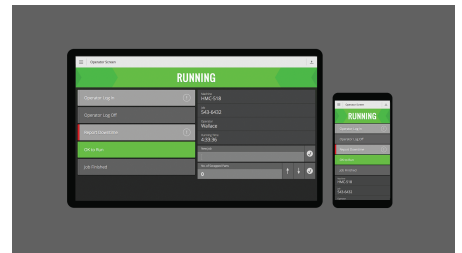
## Works with your equipment

Collect data automatically or manually using your existing wireless network, Ethernet, RS-232 or Parallel I/O. Use existing barcode readers and PCs on the shopfloor.



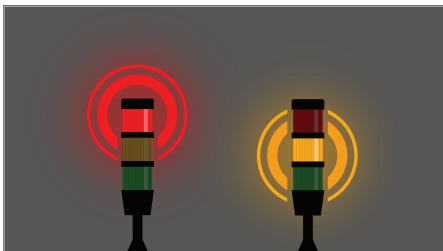
## Integration with external systems

Streamline data management and workflows by updating ERP, MES or other administrative systems directly with data from MDC-Max.



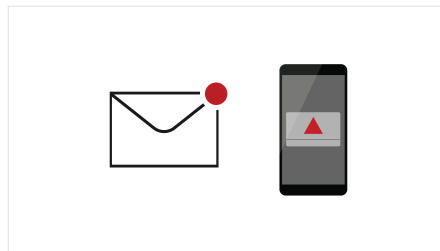
## Operator interface

Enables operators to access essential information directly at the machine and enter data such as current shift, job, reasons for downtime and scrap.



## Andon and signaling units

Control signaling units such as stack lights, buzzers and Andon boards that indicate the status of your machines.



## Email and text notifications

MDC-Max can send text and email alerts to key staff on any machine and operator event such as automatically during unattended runs.



## Secure user management

Fine-grained control over user access and permissions. View logs of user actions and system events for auditing and troubleshooting purposes.

- ✓ Supports Job and Program numbers  
Associate collected data with the job running on each machine.
- ✓ Excel reports  
Several options for exporting data and working with Excel.
- ✓ Barcode reader support  
Enables scanning of barcodes for operator feedback.
- ✓ Unlimited number of Downtime Reasons  
Collect data on any event limited only by machine capabilities.

## MORE

[www.cimco.com](http://www.cimco.com) →

Visit our website to discover many more features, videos or to download our free, 30 day trial version of CIMCO MDC-Max.



CIMCO is a leading developer of software and solutions for Computer Integrated Manufacturing including advanced CNC-Editors, DNC software for reliable CNC communication, Manufacturing Data Collection for real-time monitoring and analysis of shop floor productivity, and Manufacturing Data Management for managing, organizing and securely storing production related data.

Since 1991, CIMCO has helped companies worldwide improve their competitive edge by providing reliable software and outstanding on-site assistance. Our network of CAD/CAM/CNC resellers and consultants have sold more than 100,000 licenses worldwide and we hold great pride in continuously supporting and meeting our customers' demands by developing intelligent and competitive solutions.

MICROSOFT, MICROSOFT OFFICE, MICROSOFT EXCEL AND OTHER MICROSOFT PRODUCTS ARE REGISTERED TRADEMARKS OF MICROSOFT, INC. FURTHERMORE, CIMCO MDM DOES NOT INCLUDE A LICENSE FOR MICROSOFT OFFICE. IN ORDER TO OPEN FILES EXPORTED IN XLSX OR XLS FORMAT, A LICENSE OF MICROSOFT EXCEL MUST BE PURCHASED SEPARATELY FROM MICROSOFT, INC.

## MAIN OFFICES

**DENMARK**  
 CIMCO A/S  
 VERMUNDSGADE 38A  
 COPENHAGEN, DENMARK  
 TEL: +45 45 85 60 50  
 FAX: +45 45 85 60 53  
 EMAIL: info@cimco.com

**AMERICAS**  
 CIMCO AMERICAS LLC  
 7341 OFFICE PARK PLACE #202  
 MELBOURNE, FL 32940  
 TEL: +1 704 644 3587  
 FAX: +1 704 943 0514  
 EMAIL: info@cimco.com

CIMCO HEADQUARTERS AND MAIN TRAINING FACILITY ARE LOCATED IN THE DANISH CAPITAL COPENHAGEN. THIS IS THE BASE OF OPERATION FOR THE SALES AND SUPPORT TEAM. OUR TECHNICAL SERVICE STAFF TRAVELS WORLDWIDE AND HAS LOCAL OFFICES IN SELECT COUNTRIES.

## LOCAL OFFICES / RESELLERS WORLDWIDE

### EUROPE

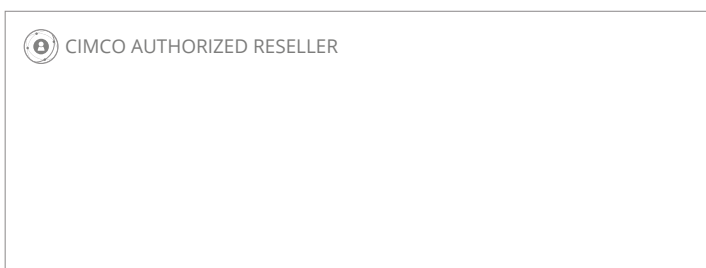
- |                |         |                       |                |
|----------------|---------|-----------------------|----------------|
| AUSTRIA        | FINLAND | NETHERLANDS           | SLOVAKIA       |
| BELARUS        | FRANCE  | NORWAY                | SLOVENIA       |
| BELGIUM        | GERMANY | POLAND                | SPAIN          |
| BULGARIA       | HUNGARY | PORTUGAL              | SWEDEN         |
| CROATIA        | IRELAND | ROMANIA               | SWITZERLAND    |
| CZECH REPUBLIC | ISRAEL  | RUSSIA                | TURKEY         |
| DENMARK        | ITALY   | SCOTLAND              | UKRAINE        |
| ESTONIA        | LATVIA  | SERBIA AND MONTENEGRO | UNITED KINGDOM |

### SOUTH / NORTH AMERICA

- |            |           |
|------------|-----------|
| BRAZIL     | USA       |
| CANADA     | VENEZUELA |
| CHILE      |           |
| COLOMBIA   |           |
| COSTA RICA |           |
| ECUADOR    |           |
| MEXICO     |           |
| PERU       |           |

### ASIA / MIDDLE EAST / OCEANIA

- |             |                      |
|-------------|----------------------|
| AUSTRALIA   | SINGAPORE            |
| CHINA       | SOUTH AFRICA         |
| HONG KONG   | SOUTH KOREA          |
| INDIA       | TAIWAN               |
| INDONESIA   | THAILAND             |
| JAPAN       | UNITED ARAB EMIRATES |
| MALAYSIA    | VIETNAM              |
| NEW ZEALAND |                      |



More information at [www.cimco.com](http://www.cimco.com)



Follow on Facebook [/cimco](https://www.facebook.com/cimco)



Watch our product videos at [/cimcovieo](https://www.youtube.com/cimcovieo)



Follow on LinkedIn [/company/cimco-a-s](https://www.linkedin.com/company/cimco-a-s)